



2024 Broomrape Research Trials

Matthew Fatino, Brad Hanson

Department of Plant Sciences, UC Davis



Branched Broomrape *Phelipanche ramosa* syn. *Orobanche ramosa*

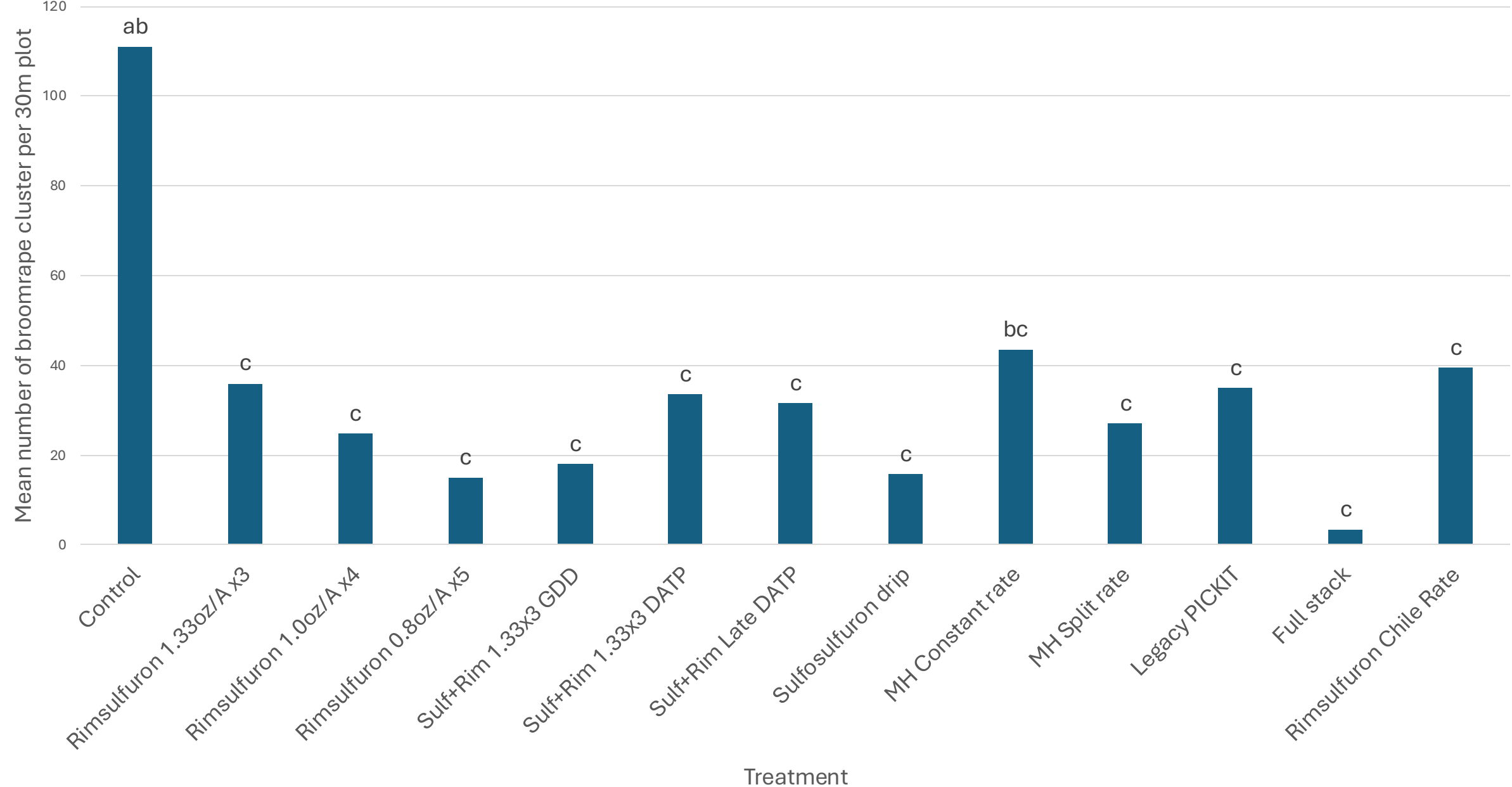
- Native to Eurasia and North Africa- Mediterranean countries
- Obligate root parasite
- Haustorium– modified root that parasitizes host plant
- Wide range of agricultural host species
 - Brassicaceae, Solanaceae, Fabaceae, Cucurbitaceae, Asteraceae
- “A-Listed” noxious weed in California
 - Requires crop destruct and hold order barring host species

2024 small plot trial

- Transplanted on April 9, 2024, with single-line 'HM58841'
- 30m (120') full row plots with 4 replications
- Treatments:
 - Rimsulfuron alone: 1.33oz/Ax3; 1.0oz/Ax4; 0.8oz/Ax5; 0.57oz/Ax3 Chile max
 - Sulfosulfuron alone: chemigated
 - Sulfosulfuron + rimsulfuron: GDD (400, 600, 800) and DATP (30, 50, 70; 20, 30, 40)
 - Maleic hydrazide: foliar split rate and constant rate
 - Legacy PICKIT: PPI sulfosulfuron and chemigated imazapic
 - Full stack: PPI sulfosulfuron, chemigated rimsulfuron, foliar maleic hydrazide



Mean broomrape clusters per plot in a 2024 small plot research trial near Woodland, CA

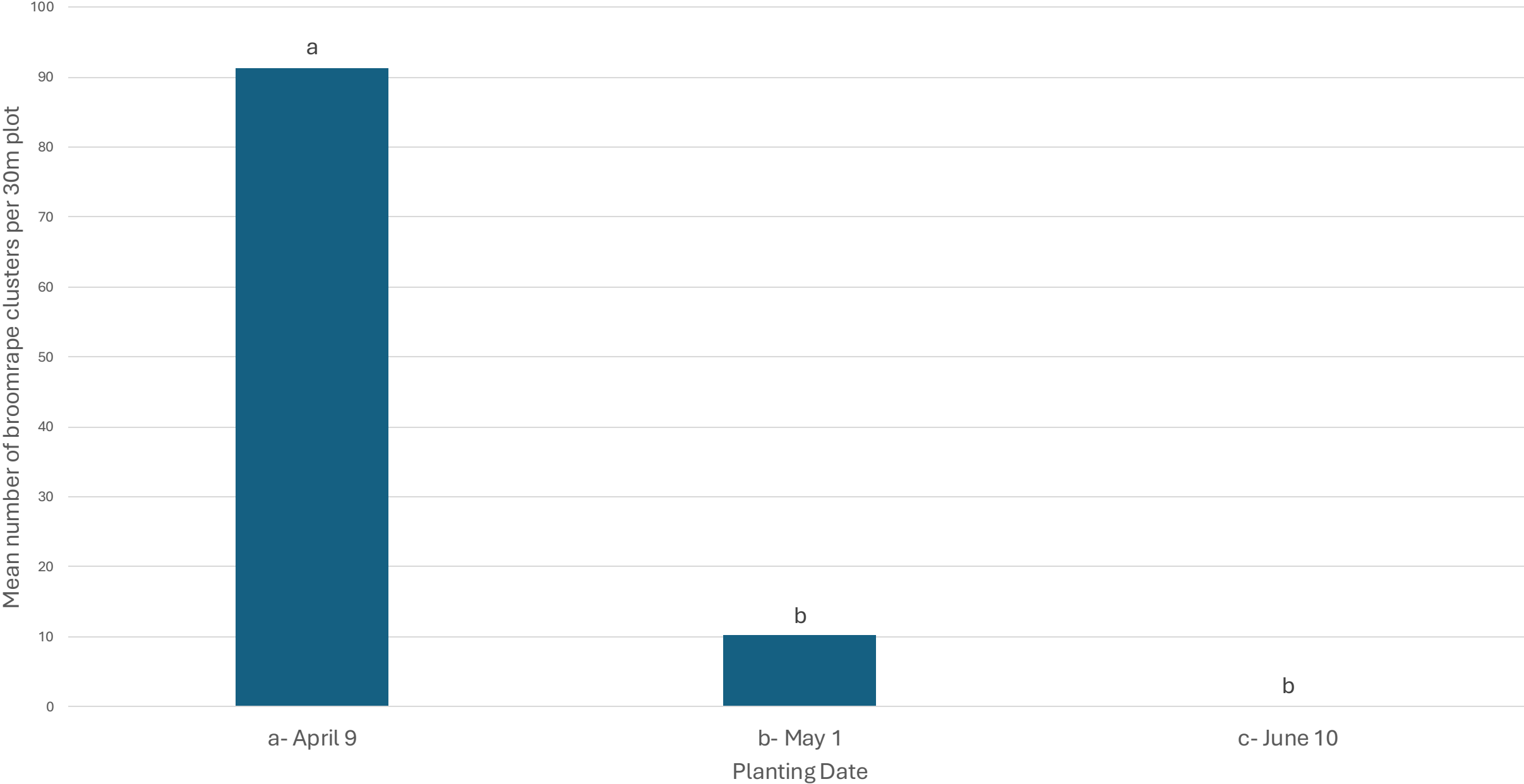


2024 planting date trial

- Single-line 'H58841'
- 30m (120') full row plots with 6 replications
- Transplant dates:
 - April 9
 - May 1
 - June 10



Mean broomrape clusters per plot in a 2024 planting date trial near Woodland, CA

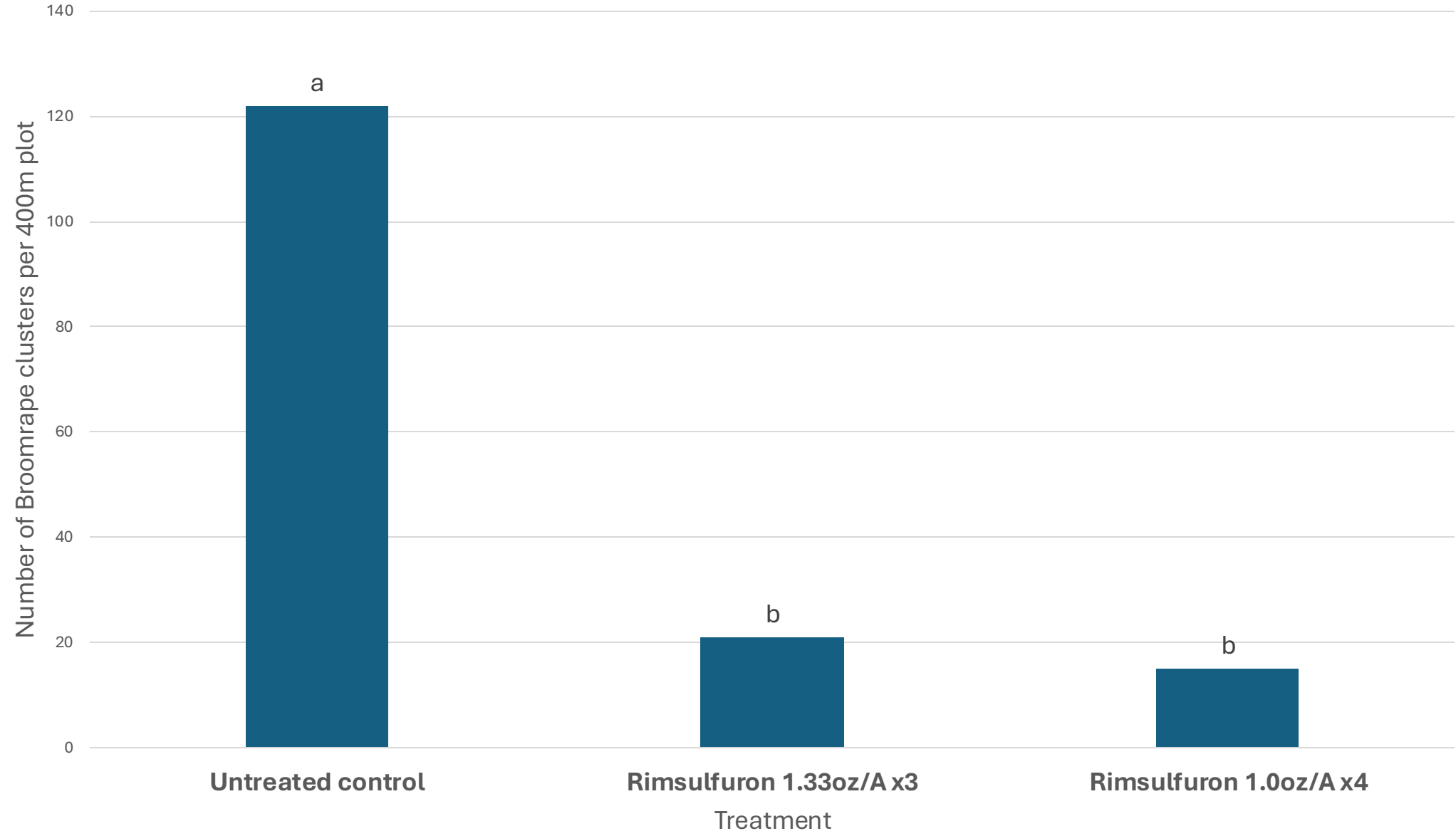


2024 Chemigated Matrix demonstration trial

- Transplanted May 24, 2024, with double-line 'H 8237'
- 400m (1275') full-row plots with 3 replications
- Treatments:
 - Control
 - Rimsulfuron 1.33oz/A x3 (20, 30, 40 DATP)
 - Rimsulfuron 1.0oz/A x4 (20, 30, 40 50 DATP)
- Harvested on October 2, 2024 (full plot harvest)



Broomrape clusters per plot from 2024 chemigated Matrix demonstration study in Yolo Co., CA



Mean yield and number of broomrape clusters per 400m plot

<u>Treatment</u>	<u>Broomrape clusters/plot</u>	<u>Yield (kg)/plot</u>
Untreated control	122 a	9306 a
Rimsulfuron 1.33oz/A x3	21 b	9143 a
Rimsulfuron 1.0oz/A x4	15 b	9158 a

Rimsulfuron efficacy at different stages

Host: Tomato

Herbicide: Matrix (Rimsulfuron)

Herbicide rate: 7mg/L; 100 ml/pot

Pot size: 32 oz

Herbicide applications: Started 5 weeks after transplanting
and applied 3 times

Herbicide application interval: A week

First application: 12/19/2023

End of experiment: 01/17/2023



Day 1
First herbicide application

Matrix drench applied 3x,
beginning early attachment
(visible small turbucle)



Matrix drench applied 3x,
beginning later attachment
(turbucle dia up to 1 inch but
but no shoot elongation)



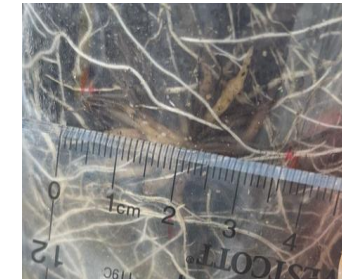
Matrix drench applied 3x,
beginning at early shoot
elongation)



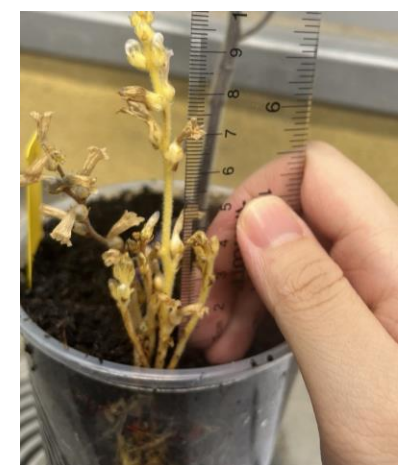
Day 7
Second herbicide application

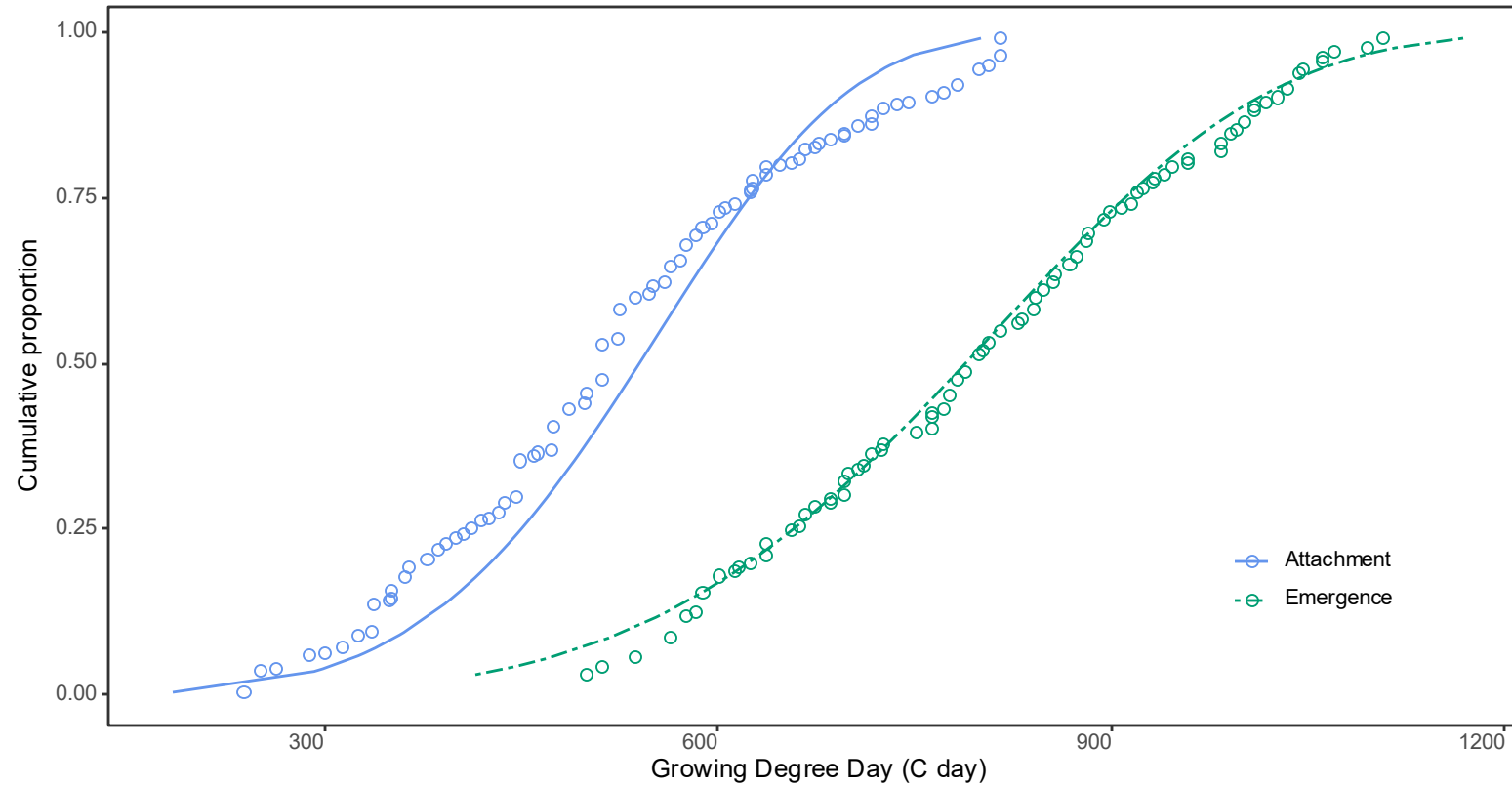
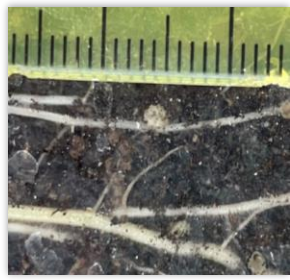


Day 14
Third herbicide application

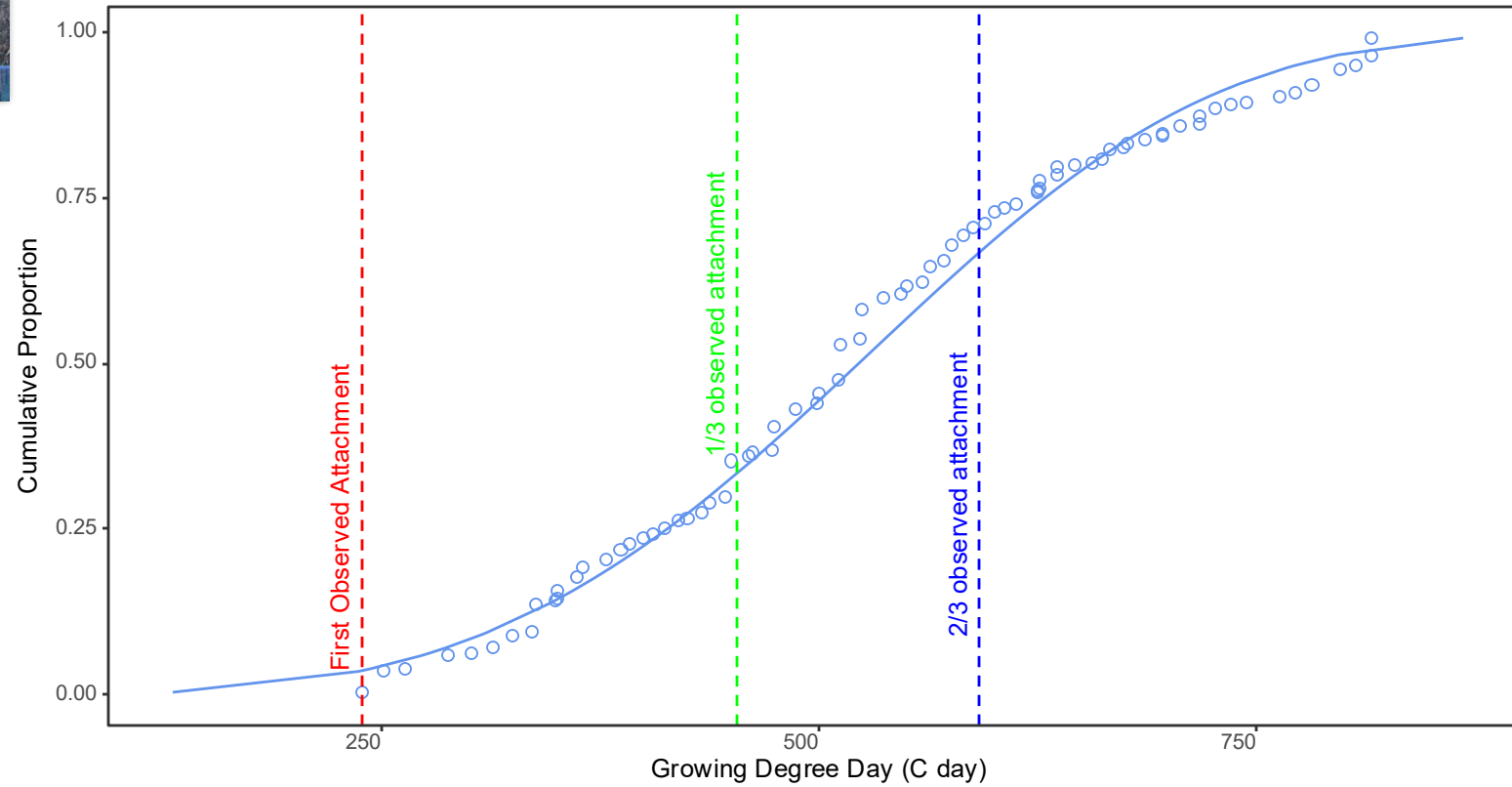
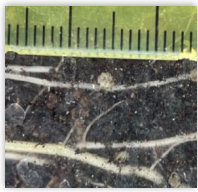


Day 29

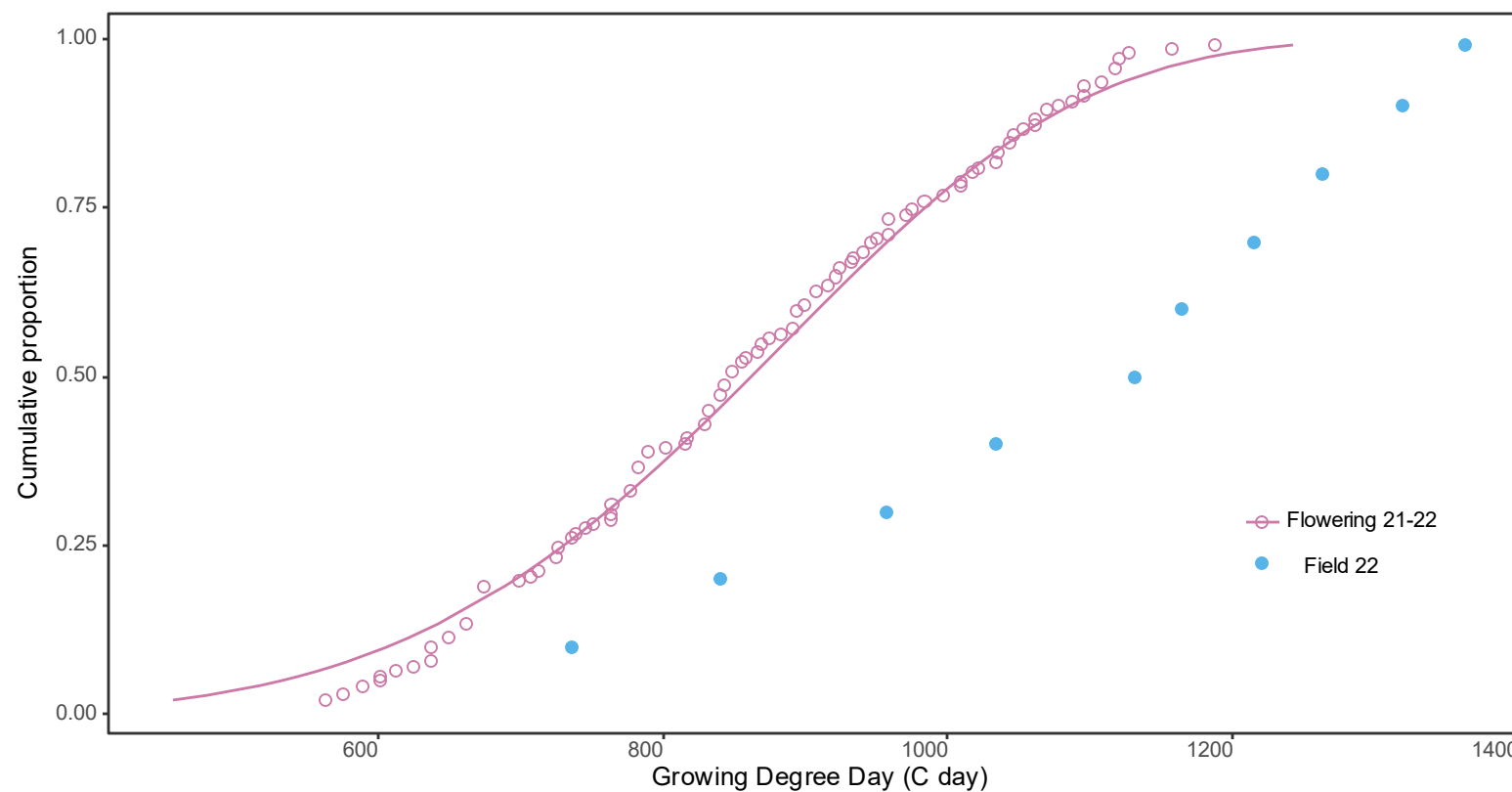




Branched broomrape attachment and emergence stages in a greenhouse experiment (data from 2021-22).



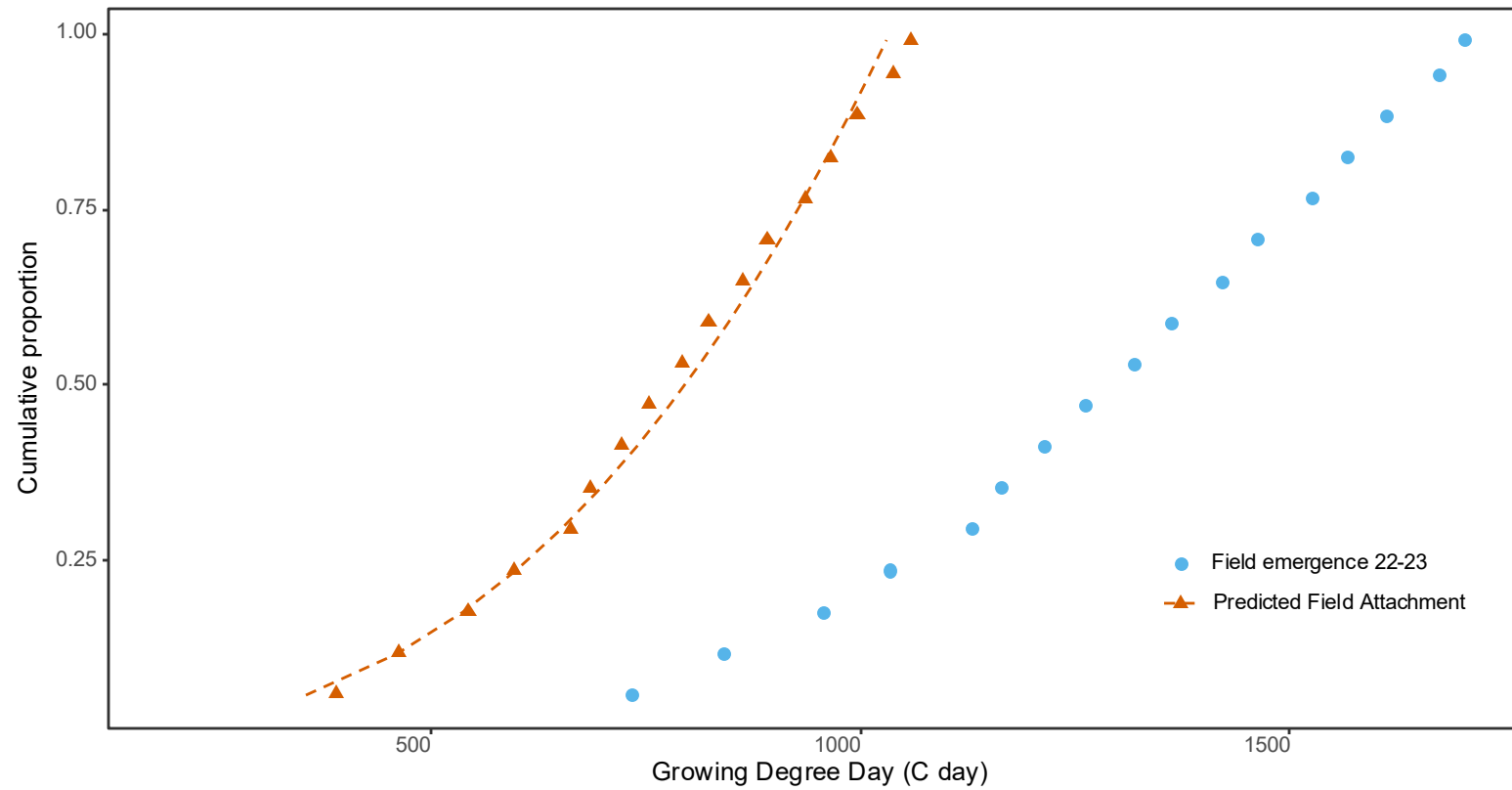
Branched broomrape attachment (>2mm) stage at greenhouse experiment



Branched broomrape early flowering stage in the greenhouse and observation in a field trial (data from 22).

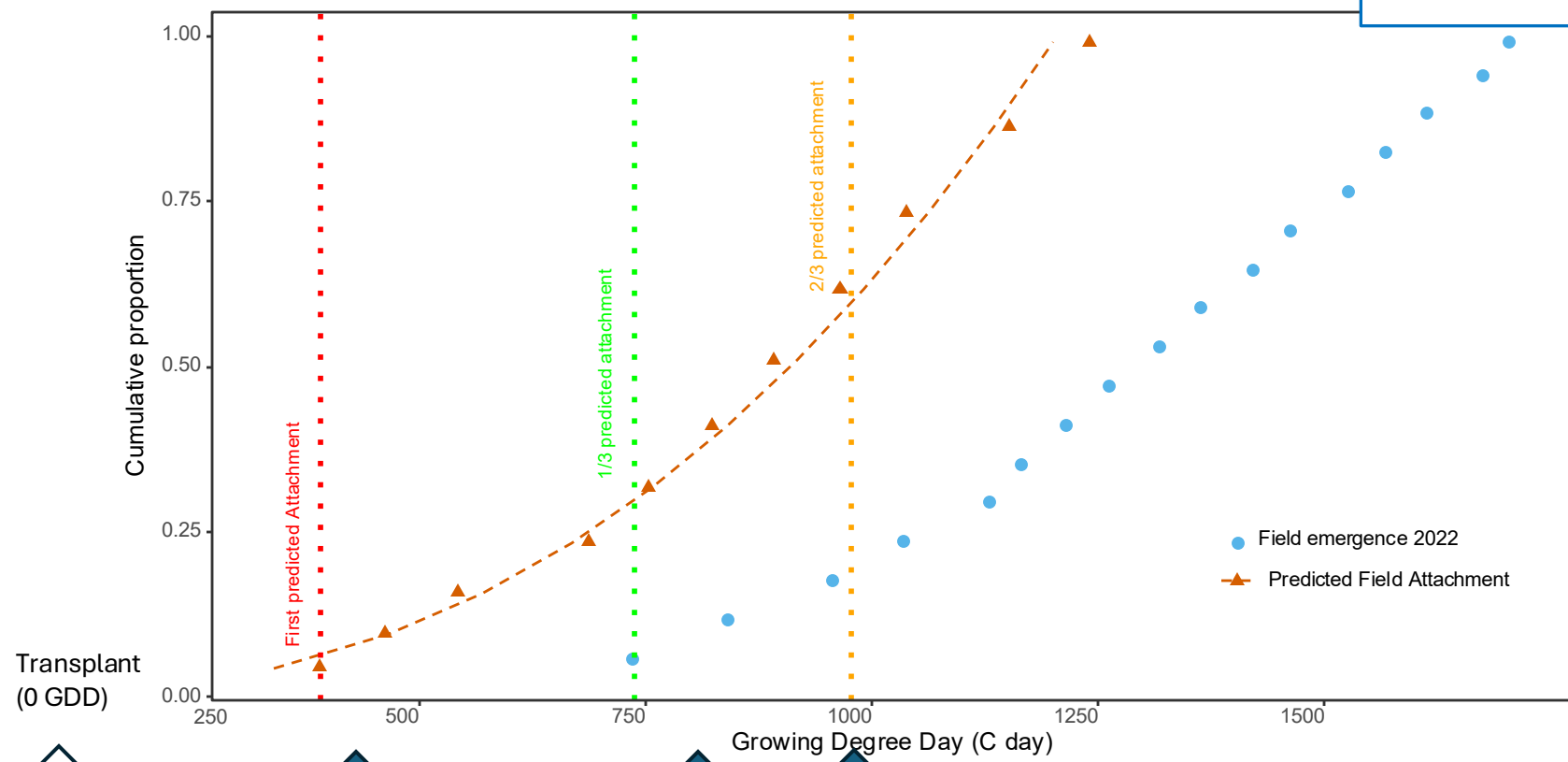
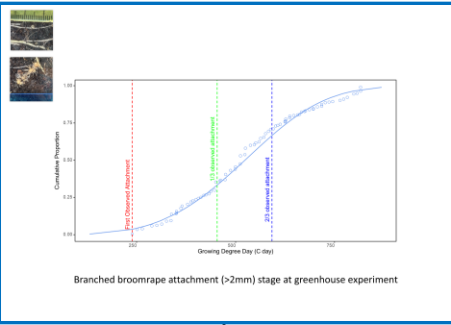
Notes:

- detection-related lag in field vs GH
- GH plugs inoculated w/ seed
- field includes ALL treatments



Branched broomrape emergence at field (data from 22-23) and predicted attachments (calculated based on GH relationship).

Branched broomrape emergence in field (data from 2022)
and predicted attachments (calculated based on GH relationship).



Transplant (0 GDD)

↑ ↑ ↑

↑ ↑ ↑

↑ ↑ ↑

↑ ↑ ↑

Blue = Apr 1, 2024 transplant
30/50/70 DATP chem

Red = May 1, 2024 transplant
30/50/70 DATP chem

Purple = start treatments earlier and
adjust interval based on GDD

Acknowledgments

- This work was funded by the California Tomato Research Institute and the CDFA Specialty Crop Block Grants Program
- We would like to acknowledge and thank Eric Schreiner and Schreiner Bros Farms, our additional grower cooperator, and Ross Lopez and AgSeeds Unlimited for farming and material support.
- I would like to thank all members of the Hanson lab for their field work
- Patricia Lazicki, Gene Miyao, Coby Goldwasser

