

Conducting research at South Coast Research and Extension Center

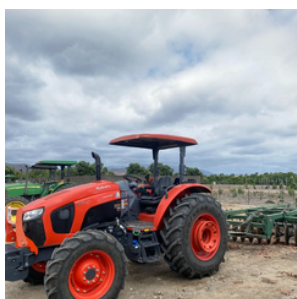


UNIVERSITY OF CALIFORNIA
Agriculture and Natural Resources

Research and Extension Center System

Insights

- When applying for grants and planning your project, make sure to account for costs associated with ending the project. E.g. tree removal, destruction of infected trees, etc.
- We charge by the quarter acre, so you will not be charged for a full acre when you're using a smaller portion of the field. Reach out to us if you need help figuring out how much space you need.
- Our acreage rate covers the cost of basic irrigation materials, fertilizers, and fields tools. If you need specialty products to be used in your project, you can provide them to us or we can purchase them and directly charge you.



What we offer

Since 1956, this 200-acre facility in the heart of temperate Orange County, CA, has served as a “living laboratory” for UC researchers to conduct research related to agriculture and natural resources. We have about 20 acres of land currently available for research projects. We also have the equipment and expertise necessary to plant and grow many different row crops, tree crops, ornamental plants, and native plants. Please inquire about available greenhouse, lathhouse, and storage space using the contact information at the bottom of the page.

What to expect

When conducting research at South Coast REC, each project is charged for the amount of field space, greenhouse space, or storage space used. Whether it is prepping the land for planting, planting the trees, setting up the irrigation, or applying the treatments for your project, we track the hours that our field staff spend on your project. We then charge the labor hours directly to your project account. Water is charged separately based on actual usage. Current rates can be found on our [website](#) under “Research”.

What to include

When applying for research funding, we are happy to work with you to develop a budget that incorporates South Coast REC fees. We will work with you to determine how much space is needed for your project, the number of field staff labor hours needed, and the exact type of labor required for your project. After you acquire funding to conduct research at South Coast REC, you must then submit a proposal through our online system, which can be found on our [website](#) under “Submitting a Proposal”. Please reach out if you need assistance. We are here to help!

Beyond research

With the help of our field staff and community educators, we can help facilitate field days, extension events, and more to showcase your research. We have strong connections with many community organizations, school districts, the Orange County Farm Bureau, and other external partners. We also create an [e-newsletter](#) that is shared to over 3,000 subscribers every month and have an engaged following on [Instagram](#). We can use these outlets to extend information about your work to the public.

Join our Living Laboratory!



7601 Irvine Blvd. Irvine, CA 92618



<https://ucanr.edu/research-and-extension-center/south-coast-research-and-extension-center>



949-653-1810



southcoastrec@ucanr.edu