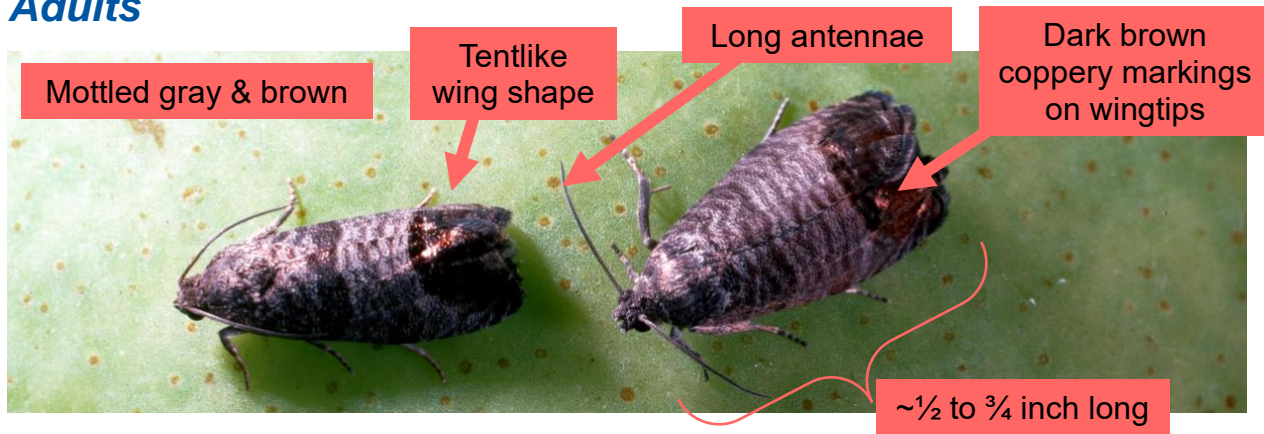


Codling Moth Identification

Adults



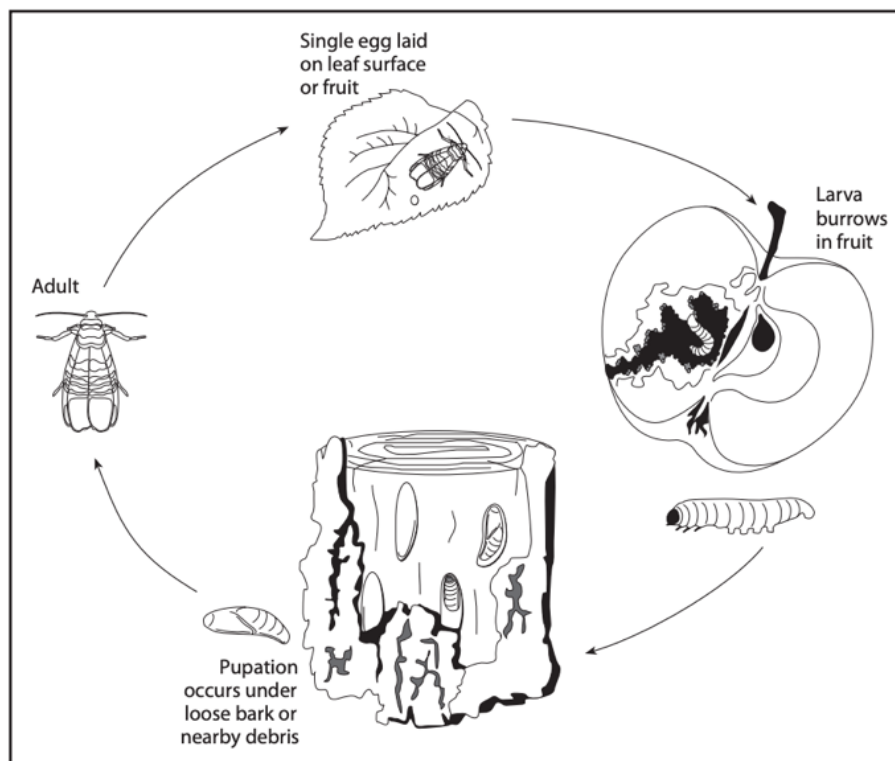
Left to right: Larva, Prepupa, Pupa



Damage on Fruit: Tunnels & Frass



Life Cycle



(ANR Publication 7412)

For More Information:

Please see the UC IPM website for more information about codling moth identification, biology, and Integrated Pest Management (IPM) strategies. <https://ipm.ucanr.edu/agriculture/apple/codling-moth>

Written by Ellie Andrews, UCCE Specialty Crops Advisor, March 2025. All photos are from the UC IPM website except for the photo of the codling moth on a trap, which was taken by Ellie Andrews.