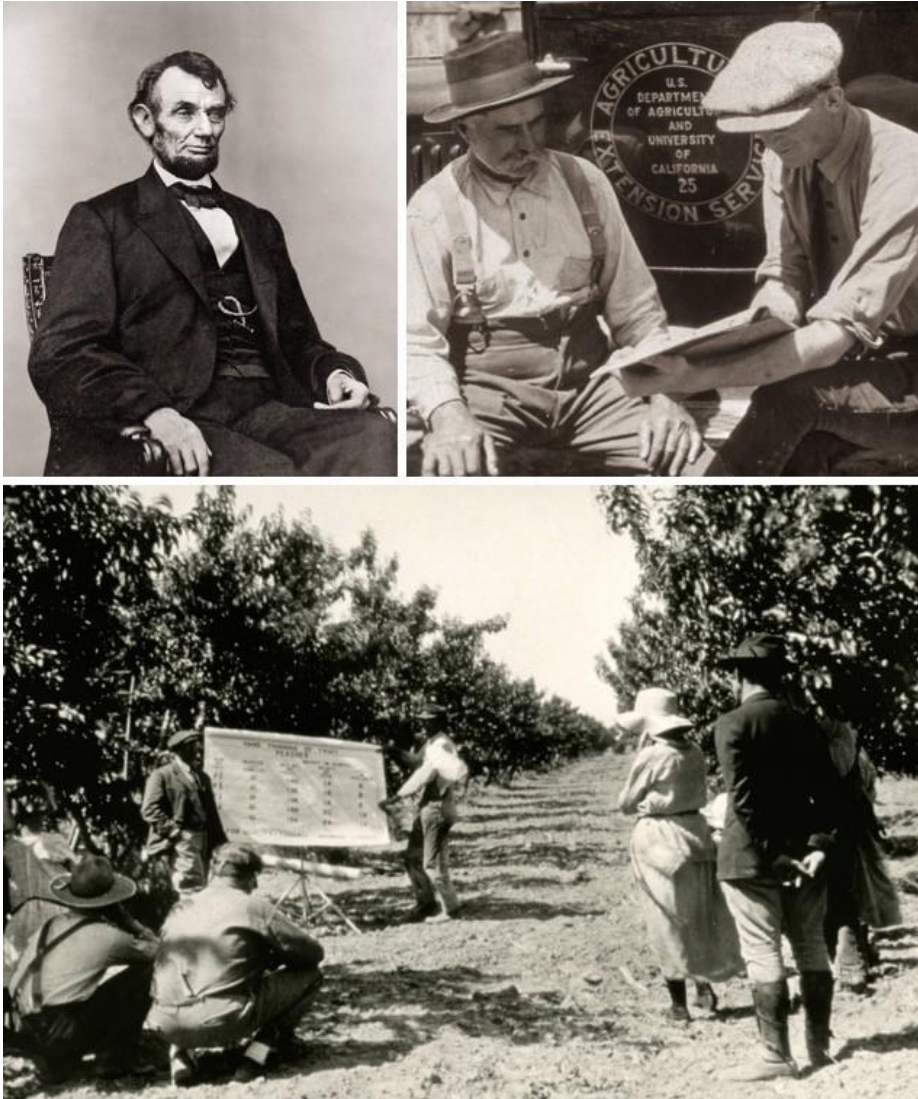




**Bringing UC information  
and practices to local  
communities to improve  
their lives and livelihoods**

# UC ANR Delivers California's Land Grant Mission



- Land Grant Universities established by Congress in 1862
- The University of California created in 1868
- Congress authorizes Agricultural Experiment Stations (AES) at Land Grants in 1887
- Cooperative Extension established by Congress in 1914



# Bringing UC to Californians

**UC ANR research & education programs support the following in all 58 counties:**

- Sustainable, safe, and nutritious food production and delivery
- Economic success in a global economy
- A sustainable, healthy, and productive environment
- Science literacy and youth development



## UC Cooperative Extension

- 186 Advisors conduct research in local communities
- 311 Community Educators delivering programs
- 109 campus/county-based Specialists

## Research and Extension Facilities

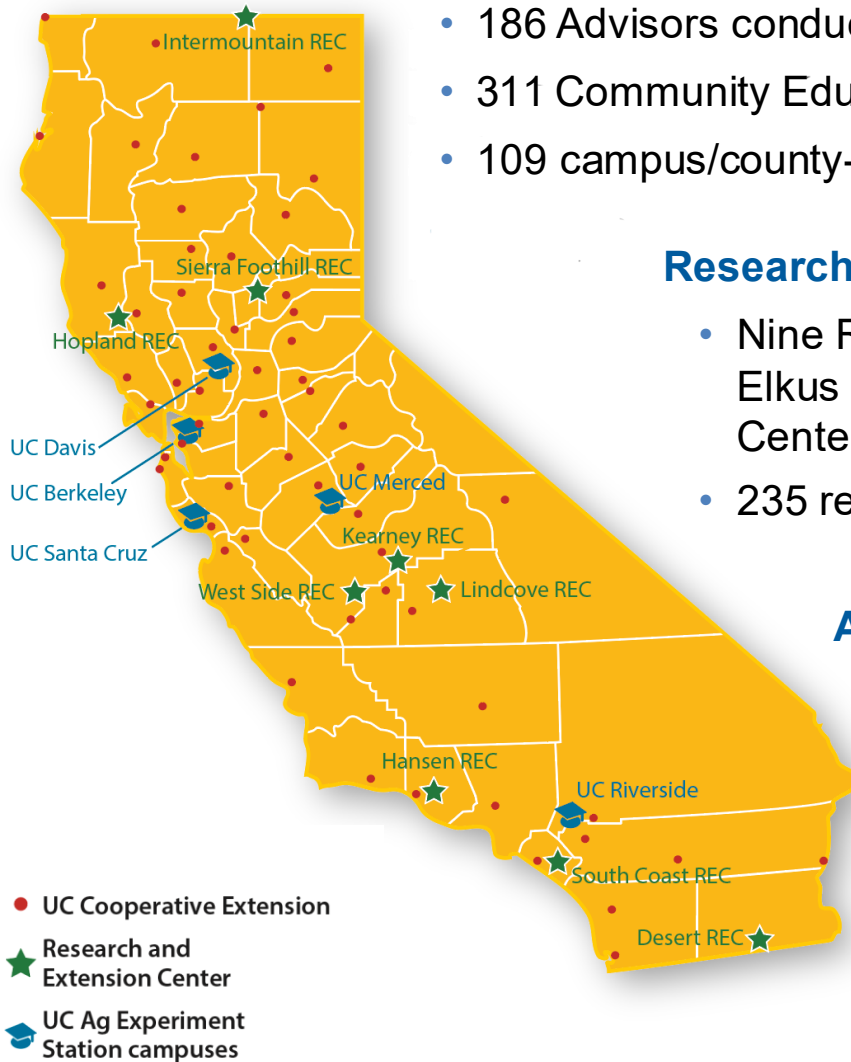
- Nine Research and Extension Centers and Elkus Ranch Environmental Education Center: 12,500+ acres
- 235 research projects

## Agricultural Experiment Station

- 513 researchers on 5 campuses
- 800+ research projects in partnership with land-grant partner USDA NIFA (2023)

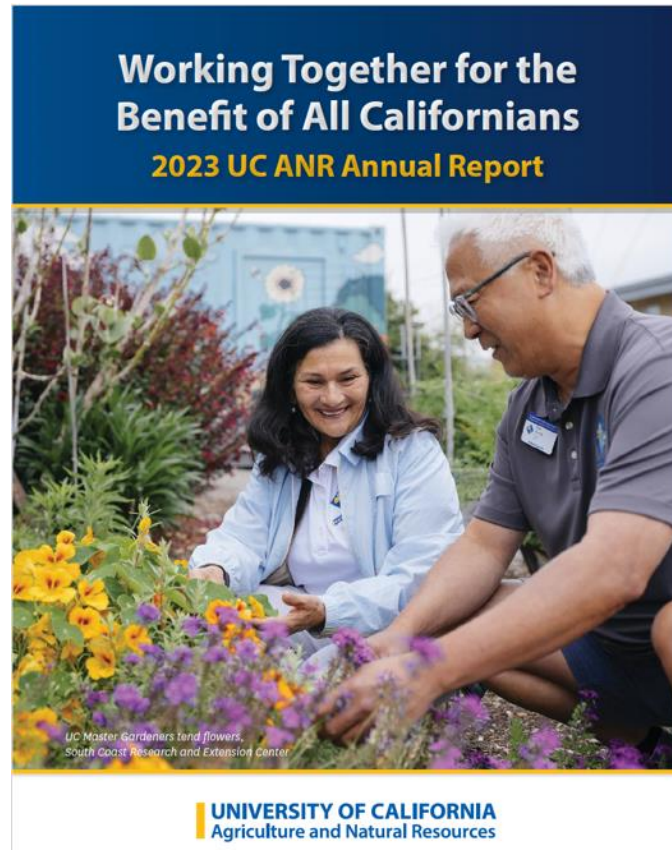
## 17 Statewide Programs and Institutes

- 4-H Youth Development
- CalFresh Healthy Living, UC
- California Institute for Water Resources
- Community Nutrition and Health
- Expanded Food and Nutrition Education
- Informatics and GIS
- Nutrition Policy Institute
- UC ANR Fire Network
- UC ANR Innovate
- UC ANR Policy Institute
- UC ANR Small Farms Network
- UC Environmental Stewards (California Naturalists & Climate Stewards)
- UC Master Food Preserver
- UC Master Gardener
- UC Organic Agriculture Institute
- UC Statewide Integrated Pest Management
- UC Sustainable Agriculture Research and Education



**Over 18,000 volunteers contribute 1.35M hours in  
donated public service, a \$52.2M value**

# UC ANR Snapshot: 2023 Program Highlights



9 novel ideas led  
to patents issued



16,647 trained volunteers  
delivered 1.2 million  
hours of public service



\$2M collectively saved on  
groceries by EFNEP  
graduates



1,500 policy  
engagement  
activities



1,255,990  
adult and youth direct  
contacts/ educational  
exchanges



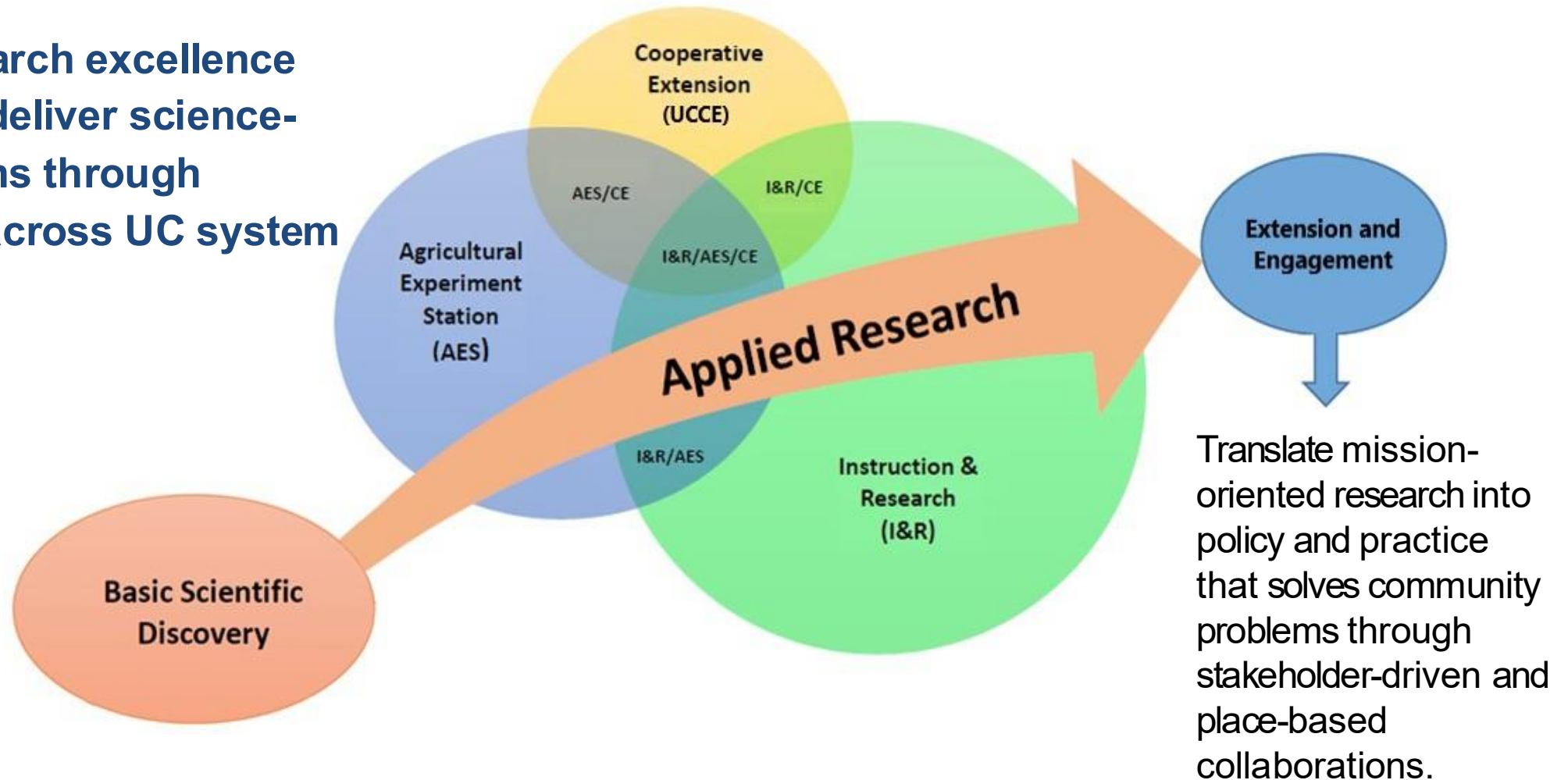
29,280 workshops,  
field days, courses &  
program meetings



1,880 publications and new  
educational materials produced



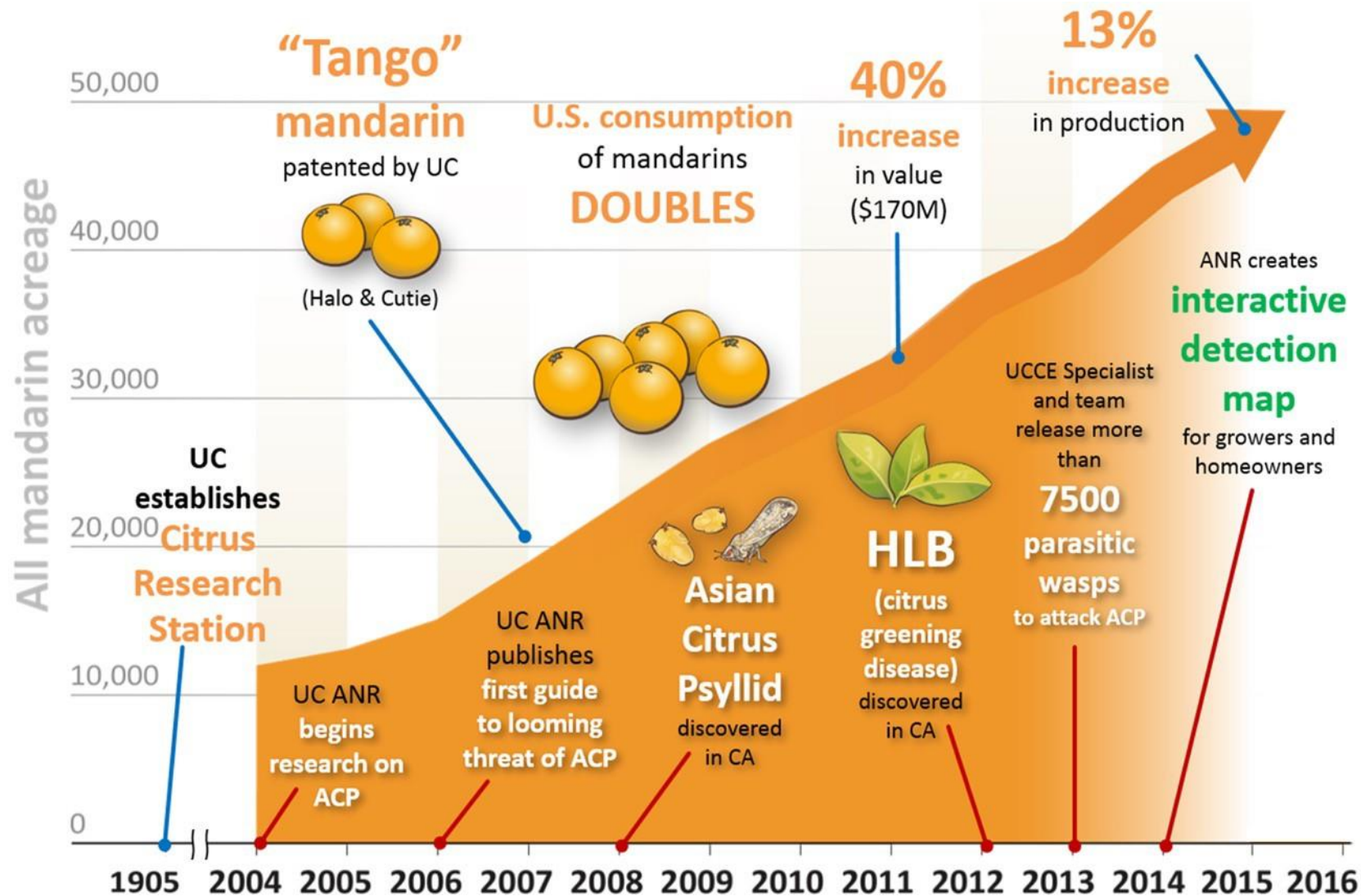
**Enhance research excellence and ability to deliver science-based solutions through partnerships across UC system and beyond.**



### **Three academic mission areas working together**

- Leverages the mission-oriented research continuum
- Transdisciplinary solutions to complex challenges

# Example of Research and Extension: Fighting Huanglongbing



## 2018-2020

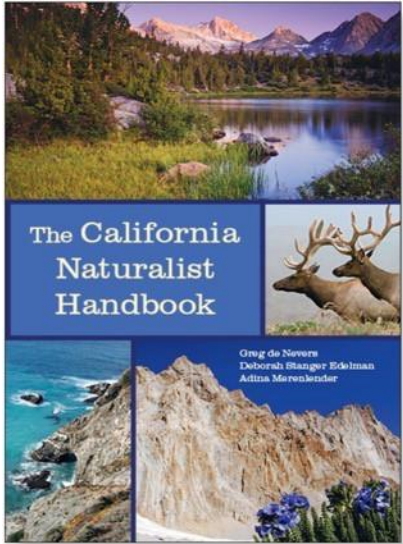
950% increased use of citrus materials tested by UC Citrus Clonal Protection Program

Developed antibody-based diagnosis using pathogen effectors as markers

Volunteers monitored IPM in 224 citrus orchards to reduce pest populations

Advanced usage of Citrus Under Protective Screens (CUPS) to minimize use of fertilizer, water & pesticides

# Example of Programs: Youth Development & Community Science



Engaging a diverse community to promote healthy communities, youth development and stewardship of California's natural resources through education and service.



Horticulture therapy program and Career Technical Education at Girl Rehabilitation Facility in San Diego



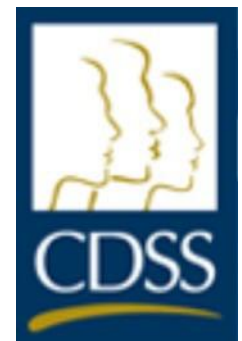


# Supporting State Agency Missions through Partnerships

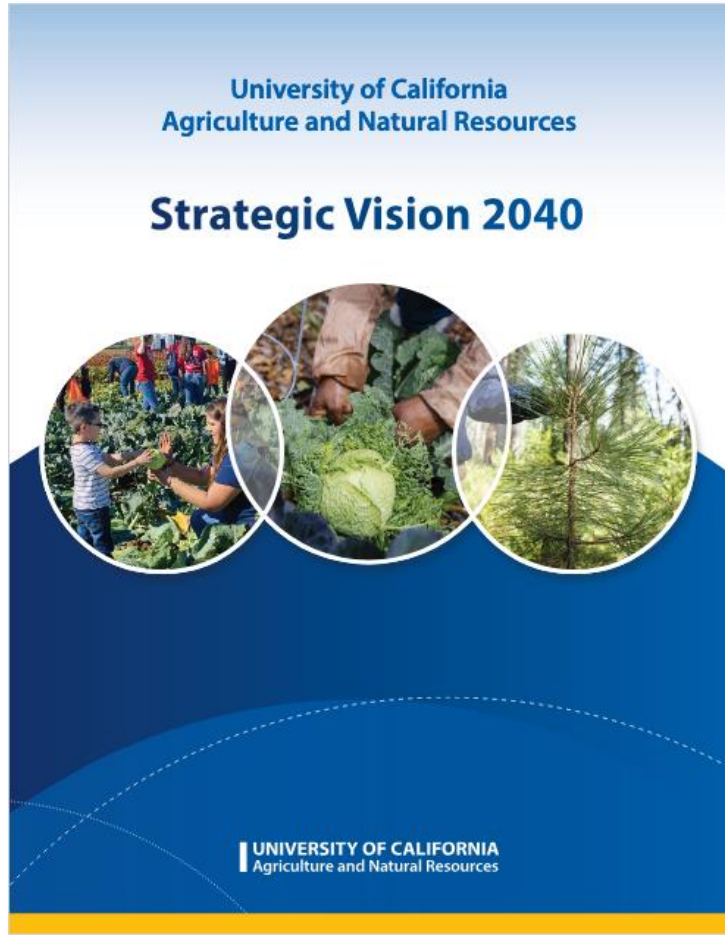
- ✓ Joint research projects and subject matter experts
- ✓ Training in pesticide safety, vegetation management, fire suppression, irrigation and more
- ✓ Developing educational materials and programs
- ✓ Mapping future fire probability under climate change scenarios to address public safety
- ✓ Promoting use of agricultural lands for groundwater recharge and drought management
- ✓ Providing evidence-based programs and teaching for SNAP-Ed and Women, Infants and Children (WIC)



CALIFORNIA DEPARTMENT OF  
FOOD AND AGRICULTURE



# Strategic Vision 2040



Read the [Strategic Vision](#)

A blueprint to guide our work, structure, and resource allocation.

Informed by feedback and insights from hundreds of UC ANR personnel, external partners, and clientele across the state.

The 2025-2040 UC ANR Strategic Plan (in development) will detail the specific goals, objectives, and metrics needed to realize the strategic vision.



# Challenges to be Addressed in 2025-2040 Strategic Plan

- Agriculture and Food Systems
- Natural Ecosystems and Working Landscapes
- Thriving People and Communities
- Climate Change
- Innovation
- Regulations, Policy, and Compliance
- Systemic Inequities

## Seven Challenges: Where We Make a Difference

**A**s a long-trusted source for practical tools and information, UC ANR is uniquely positioned to cultivate, co-create, and share science-based solutions on a wide range of local to global issues. Based on extensive input from diverse sources, seven distinct California challenges have been identified as priority areas in which UC ANR can make a significant impact over the next 15 years.

The following pages outline just a few examples of actions UC ANR can take to drive positive outcomes under each of the challenge areas. Related goals, objectives, and metrics are developed and refreshed separately every five years.

All of the challenges are complex and interrelated, demanding interdisciplinary approaches to drive equitable, appropriate, and practical solutions. These challenges are all critically important and are listed alphabetically, not in any order of priority.

### Our Priorities

*These first three challenges specifically relate to UC ANR's research and programming core:*

#### Agriculture and Food Systems

California's agriculture and food systems face barriers to productivity, sustainability, profitability, and equitable distribution of healthy foods.

#### Natural Ecosystems and Working Landscapes

California's diverse ecosystems are impacted by multiple stressors, threatening ecosystem services, biodiversity, and resilience.

#### Thriving People and Communities

California's people and communities face barriers to physical, nutritional, social, and economic well-being, coupled with inequitable opportunities for development and civic engagement.

*These next four challenges are overarching and impact all areas of UC ANR research and programmatic activity:*

#### Climate Change

Climate change fundamentally threatens California's communities, ecosystems, agriculture, and other working landscapes, creating urgent demand for scalable strategies to mitigate causes and build resilience.

#### Innovation

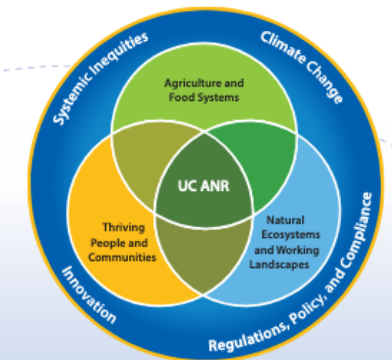
Rapidly changing information, technology, materials, and public demands necessitate the development, evaluation, and adoption of secure, innovative tools and solutions.

#### Regulations, Policy, and Compliance

California faces a complex, ever-changing regulatory environment in which science-based input and community engagement are needed to inform policy decisions and implementation.

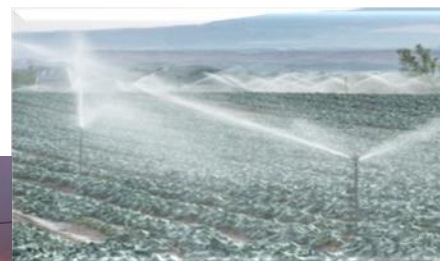
#### Systemic Inequities

Inequitable access to critical resources stresses many segments of California's population, causing significant disparities in well-being.



# UC ANR Research & Extension Needed More than Ever

- New technologies, crops and tools required
- Food and nutrition systems are fragile
- Climate change impacts
- Economic disconnects
- Disaster response



## Need Solutions for:

- Worker and community well-being
- Industry recovery, resiliency and compliance
- Market competitiveness, growth and profitability



# UC ANR Growing and Thriving in our Second Century

- ✓ Develop new partners, non-traditional resources, improved visibility
- ✓ Reach more Californians – expand number and diversity of audiences
- ✓ Ensure delivery & services are relevant
- ✓ Leverage new technology and methods; retool, recapitalize, reinvest in facilities and infrastructure
- ✓ Deliver our mission – be a catalyst for positive change

