



End-season fumigation with MITC products:

Controls:

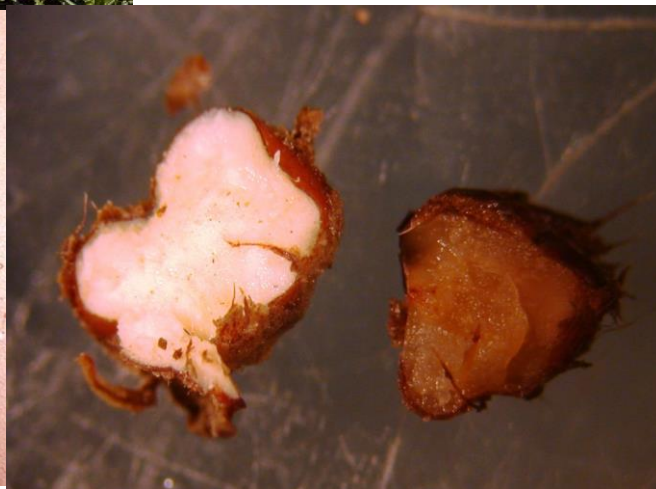
- Nutsedge tuber germination under drip lines
- Fusarium in soil

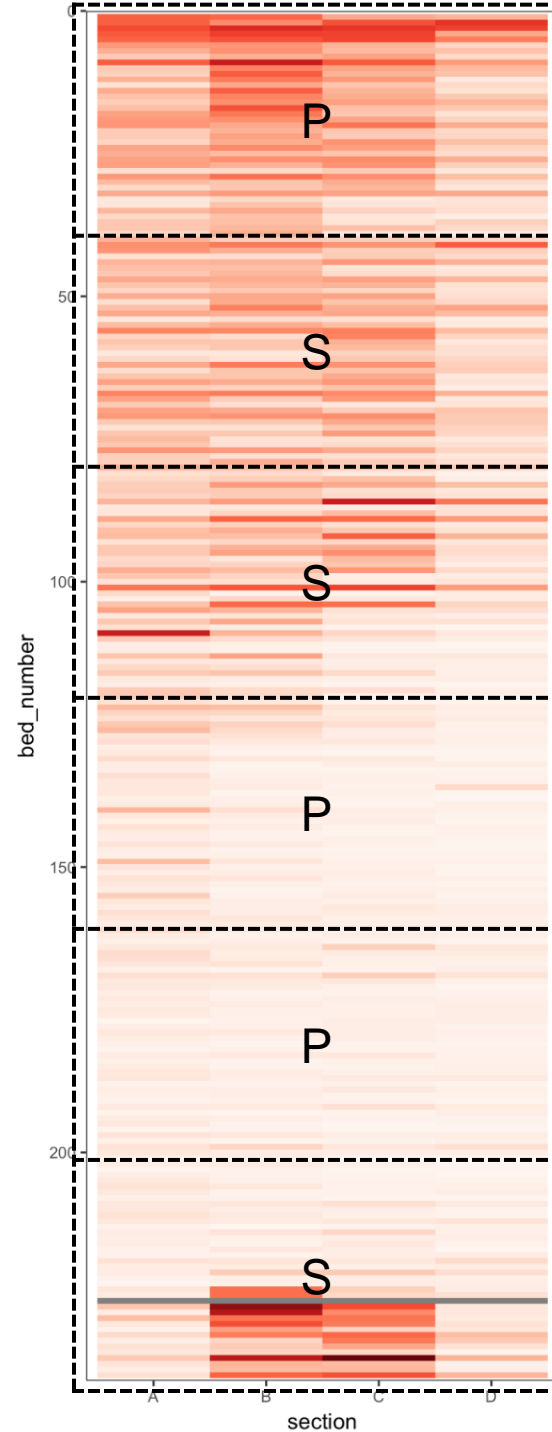
Does not control:

- Nutsedge tubers in-between drip lines
- Pathogens in infested strawberry crowns

Costs:

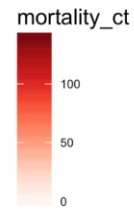
- \$600-800/A





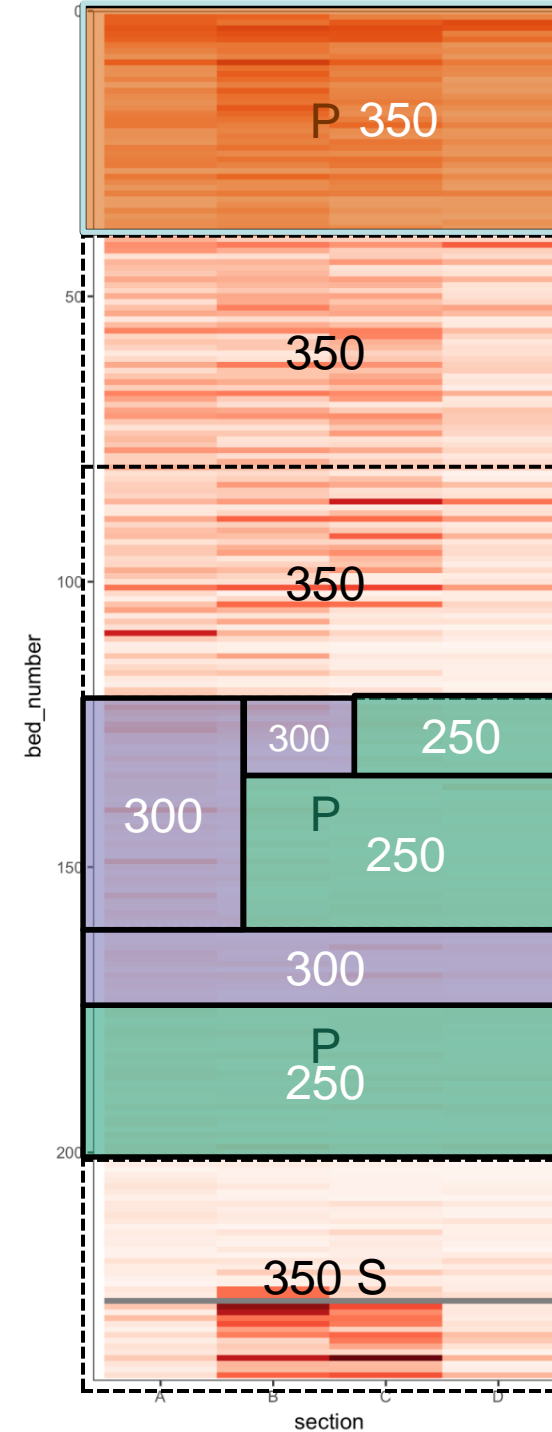
Mortality and rates

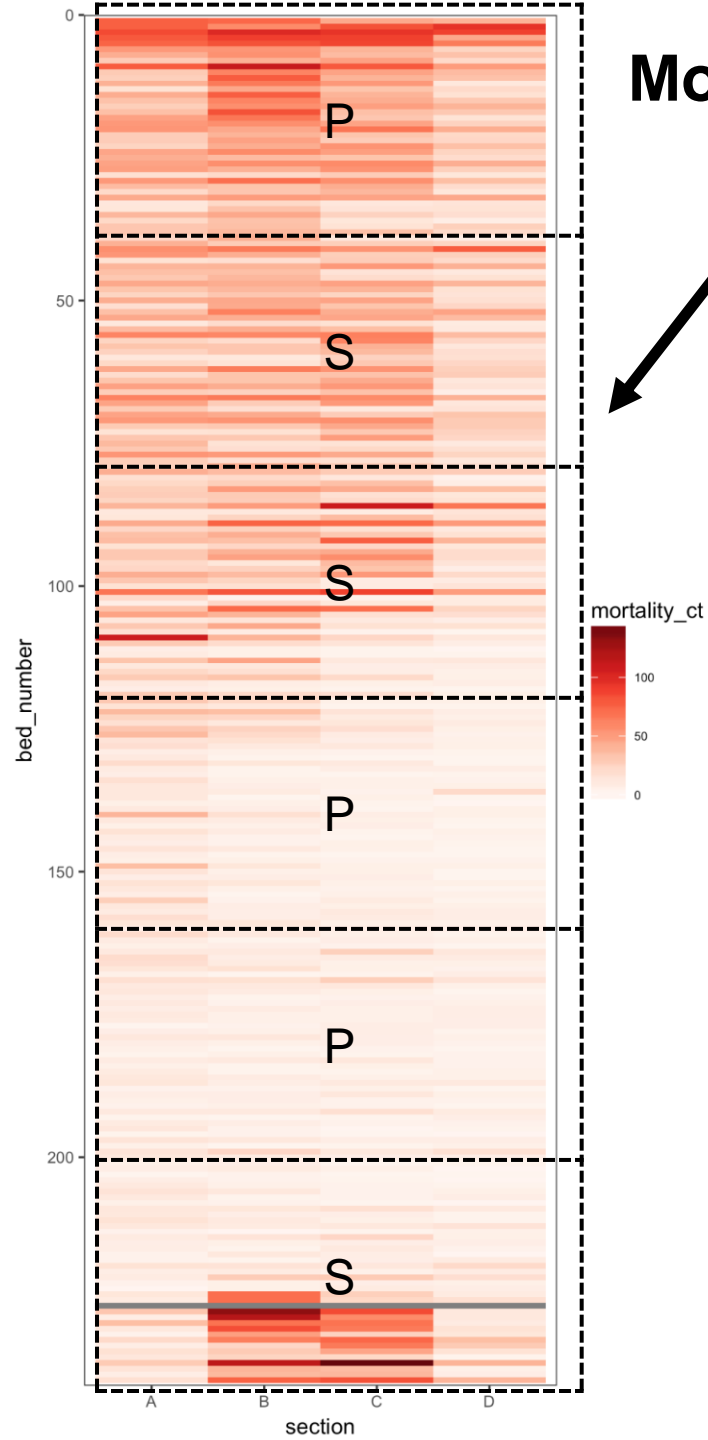
S = Standard
P = Precision



Rate Zones

- High
- Medium
- Low

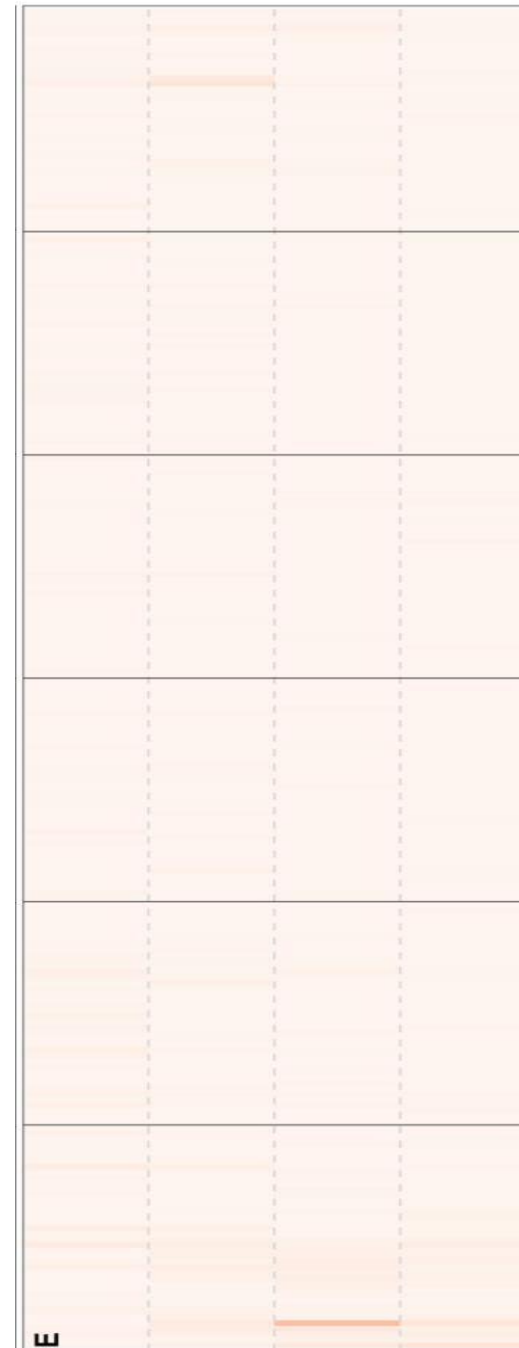




Mortality end-season 2017 and 2018

16% reduction in lbs
of Pic by using
precision rate vs
350lbs/A broadcast
with
**NO YIELD
REDUCTION**

S = Standard
P = Precision



If no mortality map or field history:

RPA tools for rapid field or lab diagnostics of pathogens

- Available for pathogens in plant tissue
- Being developed for pathogens in soil

What levels of pathogens are OK for your strawberry variety?

- **Fusarium inoculum (0,100,500,1000 and 2000 CFU/g soil) mixed into soil in planting holes**
- **Albion, Monterrey and UC45 (short-day with Fus resistance) evaluated**