

Spring Almond Nutrient and Water Management Field Day

Tuesday, March 26th, 2019 - Chico, CA

Please join us on Tuesday, March 26th from 8:30 am to 12:30 pm to participate in talks and rotating sessions on best water and nutrient management practices. This event is co-sponsored by UC Cooperative Extension, UC Davis, CDFA-FREP and the Almond Board of California.

Agenda

8:30-9:00-Registration and coffee/treats

Group Talks:

9:00-9:30 am- Welcome! Grower/management conversation about goals and practices.

9:30 – 10:00 am- ABC Overview and Almond Sustainability Program.

Rotating Stations (10:00-12:30pm)

- Forward tissue sampling and overview of BMP trials to manage N and water (Patrick Brown)
- Barriers to adoption of nitrogen management Practices. (Sat Darshan Khalsa)
- Incorporating pressure chamber readings to refine irrigation management. (Luke Milliron)
- Hull rots, their biologies and management. (Franz Niederholzer)
- High Frequency Low Nitrogen (HFLC) fertigation trials. (Teena Armstrong-Stockert)

Lunch to follow



Field day will highlight recent experimental results on BMP trials conducted in collaboration between UCCE and Dr. Brown's lab.

March 26th 8:30 am to 12:30 pm

Location: **Chico State University Farm Pecan Orchard** (see exact directions to site below)

Requesting

3.5 CCA Continuing Education Units
2 CURES Continuing Education Units

RSVP to

[http://ucanr.edu/survey/survey.cfm?](http://ucanr.edu/survey/survey.cfm?surveynumber=26918)
[surveynumber=26918](http://ucanr.edu/survey/survey.cfm?surveynumber=26918)

**UC
CE**

University of California
Agriculture and Natural Resources

Cooperative Extension

**california
almonds[®]**
Almond Board of California

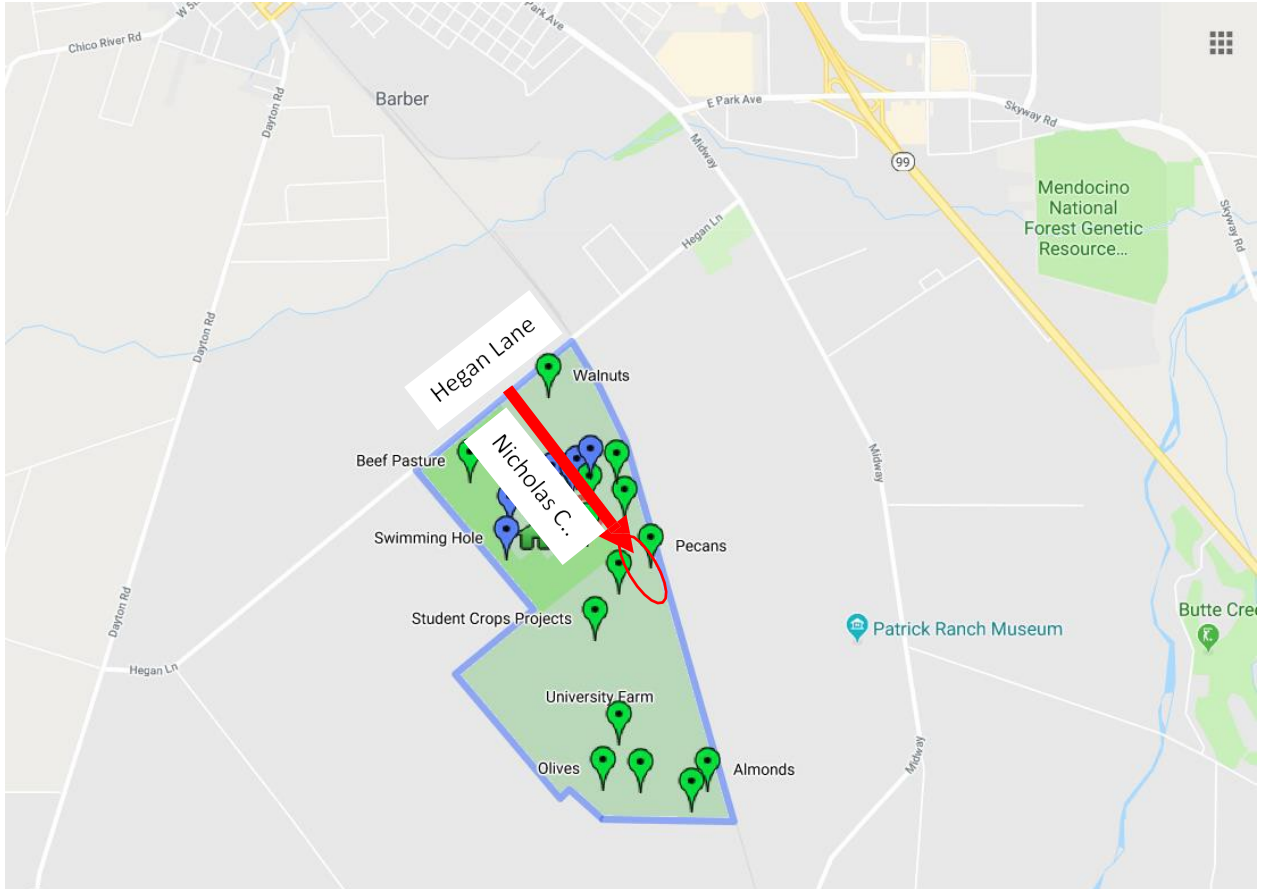
UC DAVIS
UNIVERSITY OF CALIFORNIA



North Valley Spring Almond Nutrient and Water Management Field Day

Chico State University Farm Address (***will not direct you to correct parking***): 311 Nicholas C Shouten Ln, Chico, CA

Direction to correct location on the farm: Enter the farm on Nicholas C Shouten Ln and stay straight on that road (DO NOT TURN RIGHT towards the farm office/pavilion/dairy unit. Continue straight past the greenhouses and continue straight towards the back of the farm (past a farm gate) and to the location circled by “Pecans” on the map.



Direction to correct location on the farm: Enter the farm on Nicholas C Shouten Ln and stay straight on that road (DO NOT TURN RIGHT towards the farm office/pavilion/dairy unit. Continue straight past the greenhouses and continue straight towards the back of the farm (past a farm gate) and to the location circled by "Pecans" on the map.

