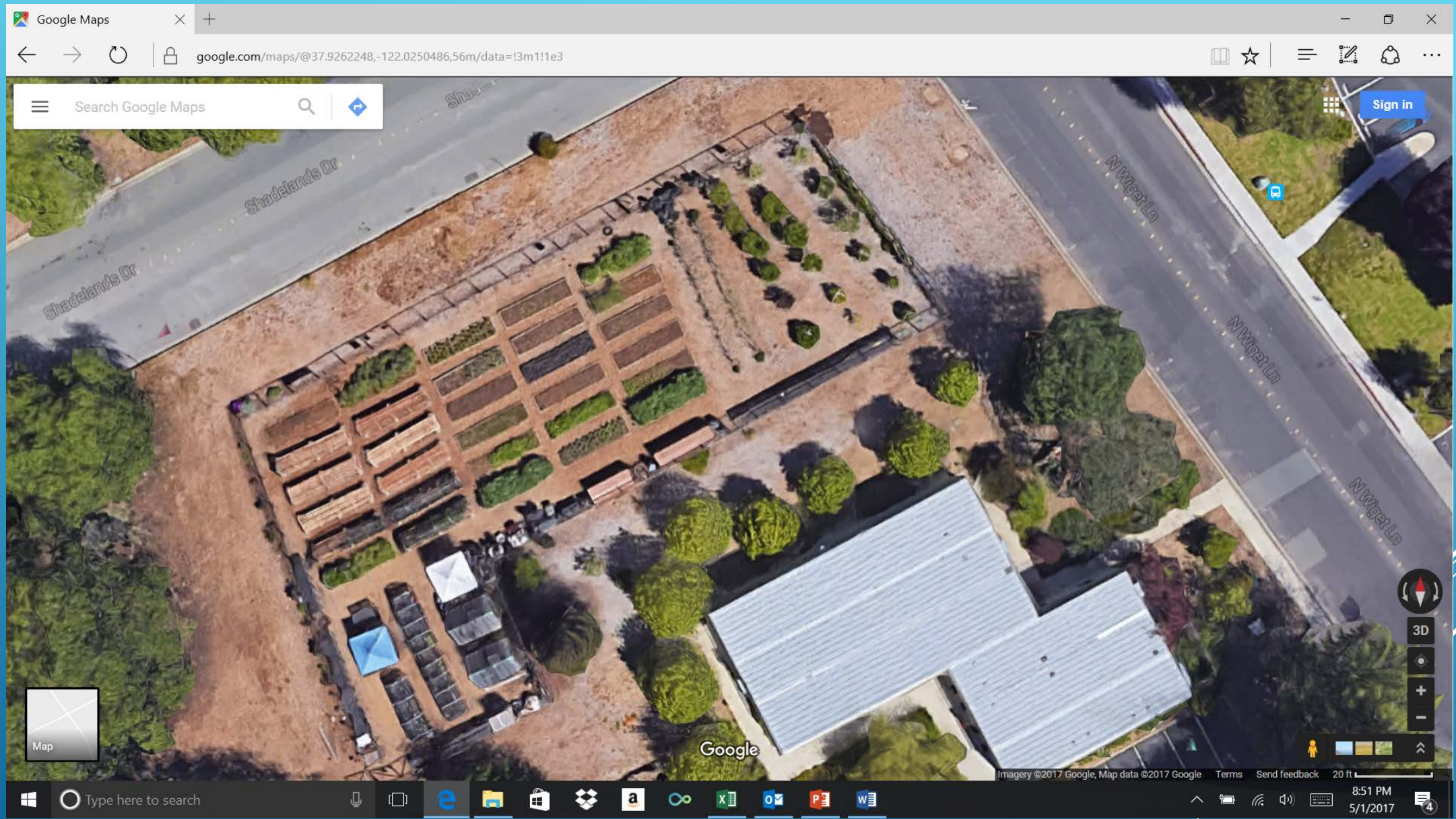




WATER MANAGEMENT AND IRRIGATION @ OUR GARDEN

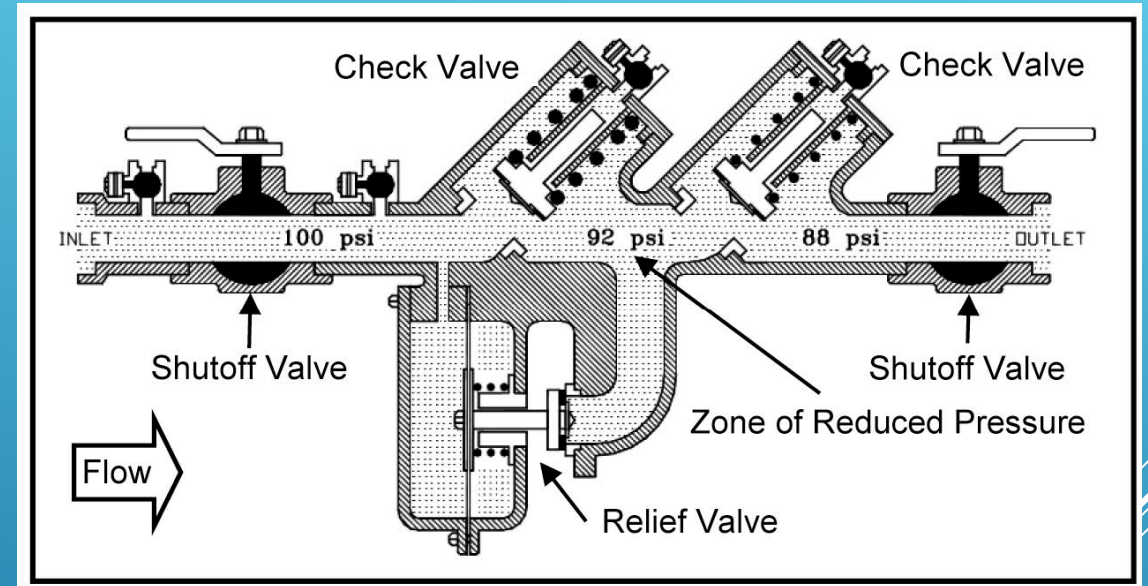
In 2012 – 2013 Contra Costa Master
Gardeners began developing a 1/2
acre garden site in Walnut Creek



SATELLITE VIEW OF OUR GARDEN



WE CONNECTED TO CITY WATER AND MARKED OUT - THIRTY
5'X20' BEDS THEN TRENCHED OUR IRRIGATION LINES



BACKFLOW DEVICE WAS INSTALLED BETWEEN CITY WATER SOURCE AND GARDEN IRRIGATION



ALL CITY WATER USE IS METERED – RECORDED AND BILLED
TO CONTRA COSTA MASTER GARDENERS



ELECTRICITY FOR TOOLS, IRRIGATION TIMER AND GREEN
HOUSES - BROUGHT IN FROM ADJACENT BUILDING



11 – 1 INCH AUTOMATIC VALVES WERE PLACED IN UTILITY
BOXES

EACH VALVE HAS A SHUTOFF VALVE – FILTER AND PRESSURE
REDUCER - 18 STATION IRRITROL TIMER WITH WEATHER STATION



IRRIGATION RISERS POPPED UP IN THE NEW BEDS AND THE
BEGINNING OF A NEW ORCHARD – EACH 1 INCH VALVE
(ZONE) WILL DELIVER IRRIGATION TO SIX - 5'X20 BEDS



TOMATO AND VEGGIE PLANTS 10 -15K PLANTS RAISED IN
GREEN HOUSES AND HOOP HOUSES ARE SOLD TO FUND
OUR GARDEN



FIRST YEAR COVER CROP AND SPRING TIME PLANTING
ALL BEDS ARE 5'X20' = 100 SQUARE FEET



12 - TABLE GRAPE VINES PRODUCE ABOUT 400 POUNDS
OF GRAPES - EACH YEAR
IRRIGATED WITH NETAFIM 1/2 INCH EMITTER LINE



THE 26 TREES IN THE ORCHARD ARE IRRIGATED WITH
AGRIFIM $\frac{1}{4}$ INCH EMITTER LINE – CIRCLING OUT TO
DRIPLINE



TOP WATERING MAY BE NECESSARY IN NEWLY PLANTED
AND SEEDED BEDS
NOTICE THE IRRIGATION PATTERN IN THE DRIP IRRIGATED
PLANTING BED



AN EXAMPLE OF THE DRIP LINES USED IN THE BEDS –
NOTICE HOW EASY IT IS TO REMOVE AND ROLL UP AND
REMOVE THE DRIP LINES WHEN WORKING THE BEDS



ALL FOOD RAISED AT "OUR GARDEN" IS DONATED TO
THE MONUMENT CRISIS CENTER – WE AVERAGE ABOUT
12 K POUNDS OF FRESH FOOD PER YEAR



RESULT OF GOOD BED PREP, PLANTING, AND PROPER
IRRIGATION