

Laws and Regulations Update 2009

**SACRAMENTO
VALLEY
OLIVE DAY**

Jean Miller

**Assistant Agricultural Commissioner
Glenn County**

Overview

- Common Violations
- Container Disposal
- Irrigated Land Program
- GF-120
- Drift



Common Violations

- Personal Protection Equipment (PPE)
 - Boots
 - Aprons
 - Glove liners
 - Eye protection
- Washing facilities (Decontamination)
- Posting of information
 - Field
 - Emergency medical care

Personal Protection Equipment

Chemical resistant footwear

- Example: rubber irrigator boots
- Do not tuck pant legs into boot
- When required by the label
 - Everyone must follow the label (even the grower)
- Examples of pesticides
 - Goal, Goal tender, 2,4-D, MCPA, Omite



Personal Protection Equipment

Chemical Resistant Apron

- A garment that covers the front of the body from mid-chest to the knees
- When required by the label
 - Everyone must follow the label (even the grower)
 - Usually for mixers/loaders
- Examples of pesticides
 - Goal, 2,4-D, MCPA, Comite



Personal Protection Equipment

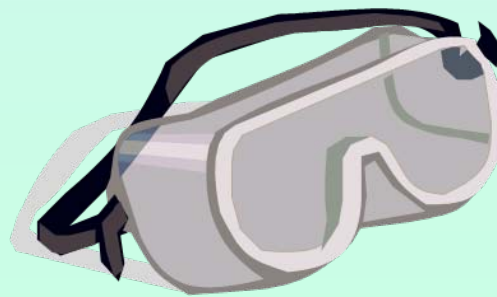
Gloves and liners

- Must be separable from the glove
- Must not extend outside the glove
- Must be replaced immediately when it comes in direct contact with a pesticide
- Must be discarded at the end of each workday



Eye Protection

- Employees must wear eye protection when pesticides are mixed, loaded or applied or equipment is cleaned or repaired
- Employers must wear eye protection when required by the label
- Eye protection can be safety glasses (with brow and temple protection), goggles, or a face shield.



Decontamination Facilities (for employees)

Water, soap, towels and coveralls

- At the mix and load site and
- Within ¼ mile of each handler
- Water- rec. at least 3 gallons/person
- Soap- can be “waterless” hand cleaner
- Towels- single use (paper)
- Coveralls- one, clean, emergency use

Field Posting

- ✓ Responsibility of operator of property
- ✓ When required by label or regulations
- ✓ Prior to start of application
- ✓ Removed from the treated field within 3 days after the reentry interval has expired
- ✓ Readable from a distance of 25 feet



Emergency Medical Care (for employees)

- Where?
 - At the work site or
 - On the work vehicle
 - Not in an employee's wallet or in the glove compartment
- What Info?
 - Name, street address and phone number of emergency medical care facility

Disposal of Containers at the Glenn County Landfill

- Triple rinse or jet rinse
- Cut drums into quarters (length-wise or cross-wise)
- Containers to be clean and dry
- Remove the label
- Containers greater than 5 gallons must be identified with grower's name and telephone number
- No plastic can be burned

Drift

- Do not allow
- Caused by-
 - Application equipment (pressure, nozzle size)
 - Wind- direction and intensity
 - Distance to plant
- Organic neighbors?
 - Not required to post
 - Know your neighbors!



Irrigated Lands Program

- Pesticides can move and contaminate creeks, lakes, and rivers.
- Confine them to the property being treated and never allow them to get into drains or creeks.
- Do not apply pesticides under conditions where run-off is likely to occur.
- “Do not apply immediately after a rainfall or if there is a forecast for rain during or within 48 hours after application.”

GF-120 NF Naturalyte Fruit Fly Bait



- GF-120 is approved for organic use.
- “Do not apply directly to water, to areas where surface water is present.... Do not contaminate water when cleaning equipment or disposing of equipment wash waters.”
- This product could be highly toxic to bees if
 - bees are directly sprayed or
 - Bees come in contact before chemical is dried on the foliage. Once dry toxicity is very low.

Education and Outreach

- Glenn County Olive Pest Management District Outreach Program
- May 28, 2009 4:00 to 6:00 pm
- John Erickson's orchard
 - South of Road 24 and west of Road M
- Learn more about the Olive Fruit Fly and its control
- Geared for smaller growers, all are welcome!



A photograph of a row of large, ancient olive trees in a grassy field. The trees have thick, gnarled trunks and dense green foliage. The ground is covered in green grass, and the scene is brightly lit by sunlight, creating strong shadows. The text "Any Questions?" is overlaid on the left side of the image.

**Any
Questions?**

Thank You